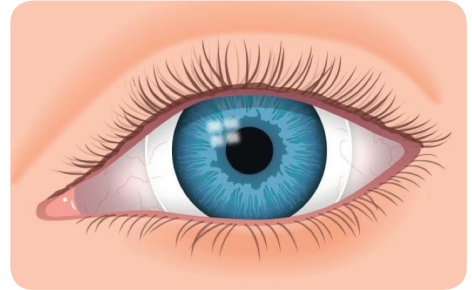


# Frequently asked questions

## How do I know if the contact lens is in the eye?

The contact lens should be centred over the iris, the coloured part of the eye, with the edges of the contact lens being visible on the white of the eye. Contact lenses for babies and young children will often appear to have a more bulbous, bubble like centre to the lens which should be well positioned over the pupil, the dark centre circle of the eye. If you cannot see the lens, then it is mostly likely that the lens has been rubbed out and you should make an appointment to attend Cameron Optometry for a new lens. If this is happening frequently it may suggest that the lens is not fitting well and your optometrist at Cameron Optometry can fix that.



A contact lens positioned well on the eye



A soft baby contact lens with a bubble like centre

## When should I worry about my child's eye?

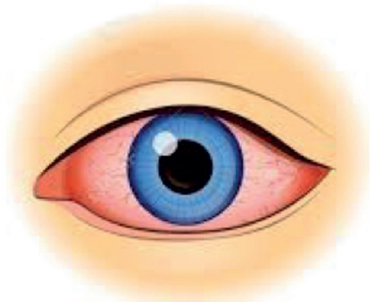
Although you may have been warned about not sleeping in contact lenses the lenses that your child wears are breathable enough that they can safely sleep in them. However, with all contact lens wear there is a risk of eye infection and this can be minimised by removing the lenses at night and re-inserting them in the morning. This is the aim for your child when you as parents have had the appropriate guidance and feel comfortable doing it.

**IF YOU NOTICE ANY OF THE FOLLOWING, THEN PLEASE CONTACT CAMERON OPTOMETRY OR THE EYE HOSPITAL:**

**1: A STICKY EYE.** A little bit of white stickiness in the eye is ok but the eye should be wiped clean and if it doesn't resolve then make an appointment at Cameron Optometry. However, if the eye is very sticky with yellow/green discharge then your child probably has conjunctivitis and advice should be sought from Cameron Optometry/ the eye hospital.

**2: A RED EYE.**

Redness on the white of the eye could indicate an eye problem and advice should be sought from Cameron Optometry/ the eye hospital



Redness on the white of the eye



Contact Lens in poor condition with deposits

**3: A CLOUDY OR DEPOSITED CONTACT LENS:**

The contact lens should be changed either at home if you are able to insert and remove the lenses and you have a spare lens or at Cameron Optometry. If you change the lens and the eye still looks cloudy then the eye should be checked at Cameron Optometry or the eye hospital.

**4: A CLOUDY CORNEA (the front of the eye).**

This looks like a bluish haze which makes the view of the pupil slightly less clear. It can be caused by high eye pressure so seek advice quickly from Cameron Optometry or the eye hospital if you are concerned